

Regulazur™ III

COMPUTERIZED MANAGEMENT OF
OPEN-FILTER DRINKING WATER
INSTALLATIONS



**DRINKING
WATER**

OPTIMIZE THE COSTS AND OPERATION OF YOUR DRINKING WATER PLANT

+ SAVINGS

Water consumption reduced to the necessary minimum, lowering operating and maintenance costs

+ FUNCTION

Optimal, automatic management of filters and guaranty of water quality



INNOVATION

COMPUTERIZED MANAGEMENT THAT OPTIMIZES THE OPERATION OF A FILTERING BATTERY.

KEY FIGURE:

75%

savings in the programming development of the automation compared to a specific development.

Regulazur™ III TECHNOLOGY...

Regulazur™ III can be integrated within a plant automation architecture, to control and regulate the different operating cycles of a sequence of side-by-side open filters, and deliver optimal, continuous performance.

Equipped with a wide range of functions, it manages the totality of filter valves, the washing phases, and the control functions of each filter, as well as the regulating valves.

A management tool that adapts to the needs of your installation: Regulazur™ III is made up of standardized and proven components, due to Degremont's extensive experience in the field.

At the same time, Regulazur™ III is equipped with an automatic function program capable of adapting to each filtration process and automation system used on site, in order to optimize the unique needs of each client.

AMONG OUR REFERENCES:

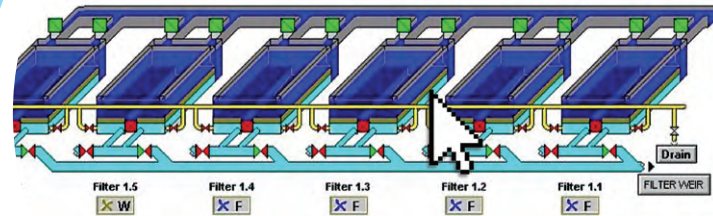
- Doha West, QATAR (135,000 m³/d capacity)
- Apremont, 85, FRANCE (86,000 m³/d capacity)
- Monistrol, 43, FRANCE (17,000 m³/d capacity)

Degremont

183, avenue du 18 juin 1940 - 92508 Rueil-Malmaison Cedex
Tel : +33 (0) 1 46 25 60 00 - Fax : +33 (0) 1 42 04 16 99
www.degremont.com

Regulazur™ III

DRINKING WATER



Regulazur™ III is a software product that allows you to automatically manage open filter installation operations.

...WHAT IT CAN DO FOR YOU

- + FLEXIBILITY AND RELIABILITY:**
 - Compatibility with standard automation systems
 - Programs automatically generated according to a standard
 - Adaptable to all types of modern automation architecture
 - Dependable and rapid start-up due to standardization and integration of user feed back
- + OPTIMIZE PERFORMANCE AND COSTS:**
 - Continuously optimizes management of each filter
 - Guaranty of consistent water quality
 - Avoids over-consumption of water
- + EASY MAINTENANCE:**
 - Programs use PID (Process and Instrumentation Diagram) equipment setpoints
 - Programs and variables accessible in text and publishing

